

Simultaneous Higher-Order Optical Flow Estimation and Decomposition

Jing Yuan* Christoph Schnörr[†] Gabriele Steidl[‡]

January 8, 2007

Abstract

We study the estimation and decomposition of optical flows from highly non-rigid motions. To this end, recent methods from image decomposition into structural and textural parts are combined with variational optical flow estimation. The approaches we suggest amount to minimizing discrete convex functionals using second order cone programming. Higher order regularization is necessary in order to accurately recover important flow structure like vortices, and to incorporate key physically properties such as vanishing divergence, for instance. For proper discretization, we apply the finite mimetic difference method that preserves the identities fulfilled by the continuous differential operators. Numerical examples demonstrate the feasibility of the complex approaches.

AMS Subject Classification: 68Y10, 65K10, 90C25, 76-04

Running Title: Flow estimation and decomposition

Key words: Optical flow estimation, optical flow decomposition, divergence free flows, higher order regularization, mimetic finite difference method, convex optimization, dual optimization techniques, second order cone programming

1 Introduction

The representation, estimation, and analysis of non-rigid motions is relevant to many scenarios in computer vision, medical imaging, remote sensing

*yuanjing@uni-mannheim.de, University of Mannheim, CVGPR-Group, 68131 Mannheim, Germany

[†]schnoerr@uni-mannheim.de, University of Mannheim, CVGPR-Group, 68131 Mannheim, Germany

[‡]steidl@math.uni-mannheim.de, University of Mannheim, Institute of Mathematics, 68131 Mannheim

and experimental fluid dynamics. Especially in fluid dynamics, sophisticated measurement techniques including pulsed laser light sheets and modern CCD cameras, as well as dedicated hardware enable the recording of high-resolution image sequences that reveal the evolution of spatio-temporal structures of unsteady flows [25]. In this connection, an important research problem is to develop variational approaches that render flow estimation from image sequences into a well-posed and numerically stable problem, while preserving small-scale flow structures that are important for empirical investigations of turbulent phenomena.

To this end, we investigate a novel class of variational flow estimation schemes by combining higher-order flow regularization with recent techniques developed for non-smooth image decomposition – see below for a more detailed exposition. As a result, we obtain variational approaches that allow not only for estimating fluid flow from image sequences but simultaneously yield a decomposition of the flow into coherent spatio-temporal flow patterns and small-scale structures.

In the following, we briefly describe the respective basic ideas in a continuous setting. In the remainder of the paper, we will derive and investigate discrete approaches using the so-called mimetic finite difference method developed by Hyman and Shashkov [18] that preserves the integral identities fulfilled by the corresponding continuous integral operators.

Image decomposition. In image denoising one is typically interested in removing noise without destroying important structures such as edges. This goal cannot be achieved with linear filters, e.g. by minimizing

$$J(f) := \|g - f\|_{L_2(\Omega)}^2 + \lambda \int_{\Omega} |\nabla f|^2 dx dy \quad (1)$$

for a given noisy image $g(x, y)$ in $\Omega \subset \mathbb{R}^2$. The regularizer incorporates the quadratic function $\Phi(s) = s^2$ with $s = |\nabla f|$. Via the Euler–Lagrange equation this variational approach can be related to a linear diffusion equation. As a consequence, the solution f smoothes g in a completely homogeneous way and blurs therefore semantically important signal structures. To overcome this drawback a variety of nonlinear methods have been proposed. One of the frequently applied approaches replaces the function in the regularization term by $\Phi(s) = s$ and thus penalizes larger deviations of $|\nabla f|$ not as hard as the quadratic function:

$$J(f) := \frac{1}{2} \|g - f\|_{L_2(\Omega)}^2 + \lambda \int_{\Omega} |\nabla f| dx dy. \quad (2)$$

This functional was first considered by Rudin, Osher and Fatemi [26]. For f having partial derivatives in L_1 the regularizer coincides with the TV

semi-norm of f

$$\|f\|_{\text{TV}} := \int |\nabla f| \, dx dy.$$

In contrast to the *linear approach* (1) we will refer to this method as *TV approach*. Based on the dual TV norm, the so-called G norm, this denoising model was enlarged for the decomposition of given images g into a structural (cartoon) part f^s and a textural part f^t as

$$\begin{aligned} J(f^s, f^t) &= \|g - (f^s + f^t)\|_{L_2(\Omega)}^2 + \lambda \int_{\Omega} |\nabla f^s| \, dx dy, \\ \text{s.t.} \quad &\|f^t\|_{\text{G}} \leq \delta. \end{aligned} \quad (3)$$

For a more sophisticated treatment of the TV and G norms we refer to [13, 21]. Meanwhile there exist various numerical realizations of (3), e.g. [3, 24, 32, 34]. Although not considered in this paper, we note that there exist other models including other than Gaussian white noise by using the L_1 norm in the data fitting term [5, 23], noise as a third decomposition component by applying Besov norms [4] or frame and TV/frame approaches [12, 28] from Harmonic Analysis. Moreover, second order derivatives were incorporated into the regularizer to avoid for example staircasing effects, see, e.g. [8, 29].

In this paper, we are interested in the decomposition of vector fields rather than scalar images. Specifically, we want to deal with optical flow fields arising, e.g., in experimental fluid dynamics.

Optical flow estimation. Instead of a single image let us consider an image sequence $\{g(x, y, t) : t \in [0, T]\}$ with a time parameter t . A common assumption is that image intensities are preserved over time:

$$g(x(t_1), y(t_1), t_1) = g(x(t_2), y(t_2), t_2), \quad t_2 > t_1. \quad (4)$$

Generalizations to other constraints exist but are not relevant for our present investigation. The linearized version of the gray value constancy assumption (4) yields the *optical flow constraint*

$$g_x u_1 + g_y u_2 + g_t = \nabla g \cdot u + g_t = 0, \quad (5)$$

where the optical flow field $u = (u_1, u_2)^\top := (\dot{x}, \dot{y})^\top$ denotes the instantaneous velocities of image elements.

Obviously, equation (5) cannot be solved pointwise because at each location and time point it consists in solving a single scalar equation for two scalar unknowns. To overcome this so-called *aperture problem* additional requirements have to be imposed. Instead of (5) we consider the least squares approximation

$$F(u) := \|\nabla g \cdot u + g_t\|_{L_2(\Omega)}^2. \quad (6)$$

In 1981 Horn and Schunck [17] pioneered the field of regularization methods for optical flow computation by suggesting to minimize the functional

$$J(u) = F(u) + \lambda \int_{\Omega} |\nabla u_1|^2 + |\nabla u_2|^2 \, dx dy. \quad (7)$$

We will refer to this widely used approach as *Horn–Schunck model*. Obviously, the Horn–Schunck model suffers from the same drawbacks as the linear image filtering model (1). The solution creates blurry optic flow fields where the blur appears also across important flow discontinuities. One way to overcome this limitation consists again in using another function in the regularizer, e.g.

$$J(u) = \frac{1}{2} F(u) + \lambda \int_{\Omega} (|\nabla u_1|^2 + |\nabla u_2|^2)^{\frac{1}{2}} \, dx dy \quad (8)$$

as counterpart to the TV model (2), cf. [2, 14, 16].

In this paper we focus on non-rigid motion analysis. In particular, we are interested in the representation of motions by components that capture different physical aspects, e.g. solenoidal (divergence free) flows. Referring again to experimental fluid dynamics, for example, the extraction of coherent flow structures which are immersed into additional motion components at different spatial scales [19] poses a challenge for image sequence analysis. However, this goal cannot be achieved using first order derivatives in the regularizer. Rather, based on early work on second–order regularizers constraining the gradients of the flows divergence and curl [1, 9, 15, 30], we deal instead of (7) with the functional

$$J(u) = F(u) + \lambda_d \int_{\Omega} |\nabla \operatorname{div} u|^2 \, dx dy + \lambda_c \int_{\Omega} |\nabla \operatorname{curl} u|^2 \, dx dy + \gamma \int_{\partial\Omega} (\partial_n u)^2 \, ds, \quad (9)$$

where the boundary is incorporated for stability reasons, cf. [36, 38]. A key property of this approach is that due to the second order of the flow derivatives involved, the regularizing terms do *not* penalize the magnitude of the basic flow components involving first-order derivatives, i.e. divergence and curl. To further motivate this approach consider Fig. 1 which shows the estimation of a solenoidal flow field by first and second order approaches. The figure clearly demonstrates the superiority of the div–curl model.

Finally, related to the TV model (8), we deal with

$$J(u) = \frac{1}{2} F(u) + \lambda_d \int_{\Omega} |\nabla \operatorname{div} u| \, dx dy + \lambda_c \int_{\Omega} |\nabla \operatorname{curl} u| \, dx dy + \frac{\gamma}{2} \int_{\partial\Omega} (\partial_n u)^2 \, ds, \quad (10)$$

involving regularizing terms that are of second order as in (9), and that are additionally suited to preserve jumps of the divergence and the curl of a flow

field, respectively, by utilizing the TV-norm. As in image decomposition we will extend this estimation approach to the decomposition of motion vector fields into physically relevant components at different scales by using a discrete equivalent of the G norm. Moreover, we will study the feasibility of an extension to the *simultaneous* estimation and decomposition of optical flows.

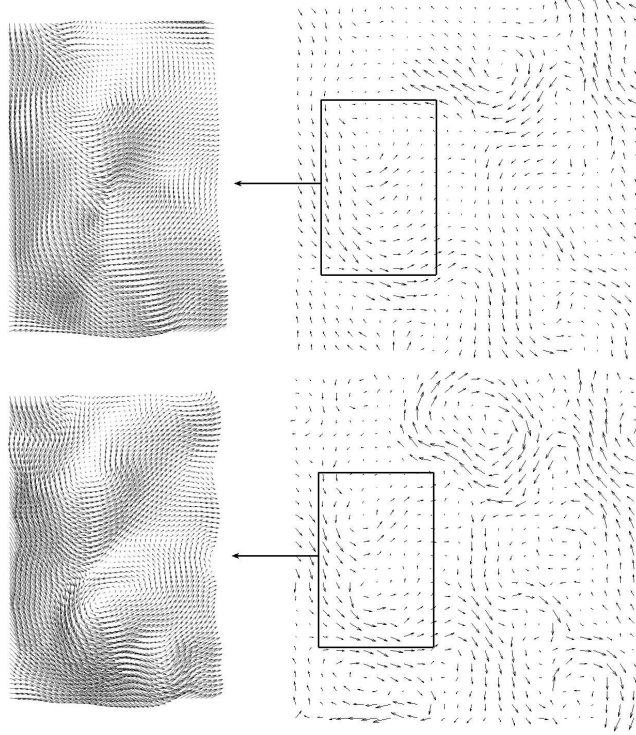


Figure 1: Estimation of a typical solenoidal flow field u . Top: Restored flow based on the Horn-Schunck model (7). Bottom: Restored flow based on the second order model (9) Vortex structures are better recovered by the div-curl approach (bottom), cf. [36].

Organization of the paper. We start by introducing our discrete setting based on the mimetic finite difference method in Section 2. We define scalar and vector fields on primal and dual grids together with appropriate norms. Then we introduce the first-order operators, where we focus on their matrix representation using tensor product notation. We show how integral identities as the Gaussian integral identity and the Helmholtz decomposition carry over to the discrete situation. Finally, we define discrete TV and G norms with respect to the primal and dual grid. Based on these definitions and results we consider the flow estimation task in Section 3. Here we are in-

terested in the linear versus the TV approach. While the linear method was already treated in [36], the higher order TV approach is novel. In Section 4, we deal with flow decomposition by the TV-G norm model. To this end we have to introduce a decomposition of the optical flow into components with constant divergence and curl and variable components which can be further decomposed into a 'structural' part and a 'textural' part. In fact, these parts comprise flow patterns at different scales. In Section 5, we combine the flow estimation and the decomposition model in order to solve both tasks simultaneously. In Sections 3, 4 and 5 we especially focus on the practically relevant case of solenoidal flows. Some parts of Sections 4 and 5 were previously announced at a conference [37]. Section 6 provides the numerical algorithms to solve the convex optimization problems posed in Sections 3, 4 and 5. We used second order cone programming (SOCP) [35, 20]. Finally, we demonstrate the feasibility of our approaches by numerical examples in Section 7.

2 Discretization

For our discrete versions of the functionals we need a careful discretization which preserves the identities satisfied by the continuous operators as, e.g. $\operatorname{div} = -\nabla^*$, $\operatorname{curl} \nabla = 0$, the Gaussian integral identity and the Helmholtz decomposition. For discretizing the relevant spaces and differential operators we apply the *mimetic finite difference method* introduced by Hyman and Shashkov in [18]. This method defines the corresponding discrete operators of ∇ , div and curl simultaneously on two grids. These grids which we call *primal* and *dual grid* are shifted with respect to each other by half a pixel.

Primal and dual scalar/vector fields. Corresponding to the grids we define the following scalar fields and vector fields:

- H_P : space of scalar fields on vertices,
- H_S : space of vector fields defined normal to sides,
- H_V : space of scalar field on cells,
- H_E : space of vector fields defined tangential to sides.

By H_P^o , H_S^o and H_E^o we denote the corresponding spaces with zero boundary elements. Finally, let $H_{V+\partial V}$ and $H_{E+\partial E}$ be the extended version of H_V and H_E to the boundary, respectively. If our primal grid consists of $m \times n$ vertices then $\dim H_P = mn$, $\dim H_V = (m-1)(n-1)$, $\dim H_S = m(n-1) + n(m-1)$ and $\dim H_E = (m-1)(n-2) + (n-1)(m-2)$. The fields are illustrated in Fig. 2.

While H_P and H_V are equipped with the usual ℓ_2 inner product, the inner products on H_S and H_E are defined with respect to the cells. To this

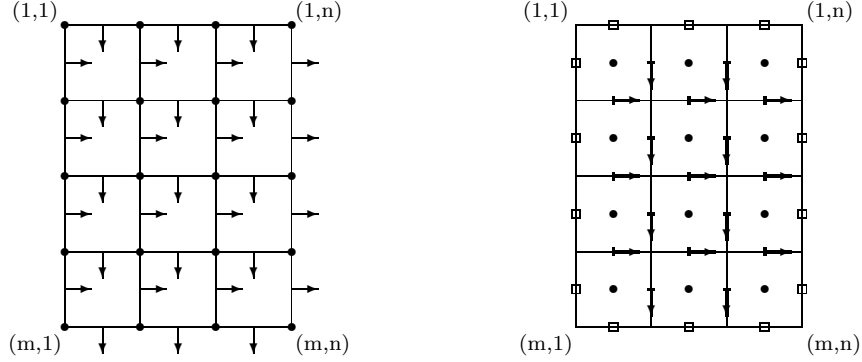


Figure 2: Primal and dual grid. Left: Spaces H_P (dots) and H_S (arrows). Right: Spaces H_V (dots), $H_{\partial V}$ (squares) and H_E (arrows) for $m = 5$ and $n = 4$.

end, we consider the elements of H_S associated with the elements of H_V by

$$u_{V_{i+\frac{1}{2},j+\frac{1}{2}}} := \frac{1}{\sqrt{2}} (u_{i,j+\frac{1}{2}}, u_{i+1,j+\frac{1}{2}}, u_{i+\frac{1}{2},j}, u_{i+\frac{1}{2},j+1})^T$$

for $i = 1, \dots, m-1; j = 1, \dots, n-1$. Then we define a dotproduct $\cdot : H_S \times H_S \rightarrow H_V$ by

$$u \cdot v := \left((u \cdot v)_{i+\frac{1}{2},j+\frac{1}{2}} \right)_{i,j=1}^{m-1,n-1} = \left(\langle u_{V_{i+\frac{1}{2},j+\frac{1}{2}}}, v_{V_{i+\frac{1}{2},j+\frac{1}{2}}} \rangle \right)_{i,j=1}^{m-1,n-1},$$

where $\langle \cdot, \cdot \rangle$ denotes the usual inner product on ℓ_2 . Now the inner product on the vector field H_S is given by

$$\langle u, v \rangle_{H_S} := \sum_{i=1}^{m-1} \sum_{j=1}^{n-1} (u \cdot v)_{i+\frac{1}{2},j+\frac{1}{2}}$$

and the corresponding norm by

$$\begin{aligned} \|u\|_{H_S}^2 &:= \left\| \left(\|u_{V_{i+\frac{1}{2},j+\frac{1}{2}}} \|_2 \right)_{i,j=1}^{m-1,n-1} \right\|_2^2 \\ &= \frac{1}{2} \sum_{i=1}^{m-1} \sum_{j=1}^{n-1} (u_{i,j+\frac{1}{2}}^2 + u_{i+1,j+\frac{1}{2}}^2 + u_{i+\frac{1}{2},j}^2 + u_{i+\frac{1}{2},j+1}^2). \end{aligned}$$

Related to the ℓ_1 norm we define

$$\begin{aligned} |u|_{H_S} &:= \left\| \left(\|u_{V_{i+\frac{1}{2},j+\frac{1}{2}}} \|_2 \right)_{i,j=1}^{m-1,n-1} \right\|_1 \\ &= \frac{1}{\sqrt{2}} \sum_{i=1}^{m-1} \sum_{j=1}^{n-1} \sqrt{u_{i,j+\frac{1}{2}}^2 + u_{i+1,j+\frac{1}{2}}^2 + u_{i+\frac{1}{2},j}^2 + u_{i+\frac{1}{2},j+1}^2}. \end{aligned}$$

Similarly, we associate elements of $u \in H_E$ with elements of H_P^o by

$$u_{P_{i,j}} := \frac{1}{\sqrt{2}} (u_{i,j-\frac{1}{2}}, u_{i,j+\frac{1}{2}}, u_{i-\frac{1}{2},j}, u_{i+\frac{1}{2},j})^\top$$

for $i = 2, \dots, m-1; j = 2, \dots, n-1$ and set

$$\|u\|_{H_E}^2 := \left\| \left(\|u_{P_{i,j}}\|_2 \right)_{i,j=2}^{m-1,n-1} \right\|_2^2, \quad |u|_{H_E} := \left\| \left(\|u_{P_{i,j}}\|_2 \right)_{i,j=2}^{m-1,n-1} \right\|_1.$$

Primal and dual operators. We use the following discrete versions of the first order operators ∇ , div and curl with respect to the primal and dual grid:

$$\mathbb{G}rad : H_P \rightarrow H_{E+\partial E}, \quad \mathbb{G}rad^\perp : H_P \rightarrow H_S$$

and

$$\begin{aligned} \mathbb{G} : H_P^o &\rightarrow H_E^o, & \mathbb{D}iv : H_S &\rightarrow H_V, & \mathbb{G}^\perp : H_P^o &\rightarrow H_S^o, \\ \overline{\mathbb{G}} : H_V &\rightarrow H_S^o, & \overline{\mathbb{D}iv} : H_E^o &\rightarrow H_P^o, & \overline{\mathbb{C}url} : H_S^o &\rightarrow H_P^o. \end{aligned}$$

Reshaping the scalar/vector fields columnwise into vectors of appropriate lengths these operators act on the corresponding vector spaces as matrices which can be described by using the first order forward difference matrix

$$D_m := \begin{pmatrix} -1 & 1 & 0 & \dots & 0 & 0 & 0 \\ 0 & -1 & 1 & \dots & 0 & 0 & 0 \\ & & \ddots & \ddots & \ddots & & \\ 0 & 0 & 0 & \dots & -1 & 1 & 0 \\ 0 & 0 & 0 & \dots & 0 & -1 & 1 \end{pmatrix} \in \mathbb{R}^{m-1,m},$$

and the tensor product \otimes of matrices. Then we have

$$\mathbb{G}rad = \begin{pmatrix} I_n \otimes D_m \\ D_n \otimes I_m \end{pmatrix}, \quad \mathbb{G}rad^\perp = \begin{pmatrix} -D_n \otimes I_m \\ I_n \otimes D_m \end{pmatrix}$$

which explains the notation $^\perp$. The operator \mathbb{G}^\perp is just the restriction of $\mathbb{G}rad^\perp$ to H_P^o . Although \mathbb{G} is not the restriction of $\mathbb{G}rad$ to H_P^o we will again use the notation $^\perp$. More precisely, we define

$$\mathbb{G} = \begin{pmatrix} I_{n-2} \otimes D_{m-2} \\ D_{n-2} \otimes I_{m-2} \end{pmatrix}, \quad \mathbb{G}^\perp = \begin{pmatrix} D_{n-1}^\top \otimes I_{m-2} \\ -I_{n-2} \otimes D_{m-1}^\top \end{pmatrix}$$

$$\mathbb{D}iv = \begin{pmatrix} I_{n-1} \otimes D_m, D_n \otimes I_{m-1} \end{pmatrix}$$

where I_n denotes the $n \times n$ identity matrix and the matrices are considered without the zero rows/columns due to embedding. Then we have on the dual grid

$$\overline{\mathbb{G}} = -(\mathbb{D}iv|_{H_S^o})^*, \quad \overline{\mathbb{D}iv} = -\mathbb{G}^*, \quad \overline{\mathbb{C}url} = (\mathbb{G}^\perp)^* \quad (11)$$

where the adjoint operator corresponds to the transposed matrices. Using properties of the tensor product of matrices we obtain that $\text{curl } \nabla = 0$ reads as

$$\overline{\text{Curl}} \, \overline{\mathbb{G}} = 0, \quad \text{Div } \mathbb{G}^\perp = -\overline{\mathbb{G}}^* \overline{\text{Curl}}^* = 0. \quad (12)$$

We extend the operator $\overline{\mathbb{G}}$ to $H_{V+\partial V}$ by incorporating the boundary elements $H_{\partial V}$ into the forward differences. Since the distance of a boundary point to its neighboring inner point is only $\frac{1}{2}$ we have to multiply the difference filter $(-1, 1)$ at the boundary by 2. The matrix of the resulting operator

$$\overline{\mathbb{G}}_1 : H_{V+\partial V} \rightarrow H_S$$

is given in the appendix. Finally, we define another extension of $\overline{\mathbb{G}}$ in one of the following ways:

- apply a linear extrapolation operator from H_V to $H_{V+\partial V}$ and then $\overline{\mathbb{G}}_1$,
- apply $\overline{\mathbb{G}}$ and then a constant extrapolation from H_S^o to H_S .

Both procedures result in the same operator

$$\overline{\mathbb{G}}_2 : H_V \rightarrow H_S$$

given in matrix form in the appendix.

Discrete integral identities. Next we are interested in a discrete version of the *Gaussian Integral Identity* $\int_\Omega \text{div } u \, dx = \int_{\partial\Omega} n \cdot u \, ds$. To this end, we introduce the boundary operator

$$\mathbb{B} := \begin{pmatrix} I_{n-1} \otimes B_m & 0 \\ 0 & B_n \otimes I_{m-1} \end{pmatrix},$$

where 0 are zero matrices of appropriate sizes and

$$B_m := \begin{pmatrix} -1 & 0 & \dots & 0 & 0 \\ 0 & 0 & \dots & 0 & 1 \end{pmatrix} \in \mathbb{R}^{2,m}.$$

Then the *mimetic Gaussian Integral Identity* becomes

$$1_{\dim H_V}^\top \text{Div } u = 1_{\dim \partial H_V}^\top \mathbb{B} u. \quad (13)$$

We will apply the following discrete version of the Helmholtz decomposition:

Proposition 2.1 (Mimetic Helmholtz decomposition)

Any $u \in H_S$ can be decomposed into an irrotational part u_{irr} and a soleniodal part u_{sol} by

$$u = u_{\text{irr}} + u_{\text{sol}} = \overline{\mathbb{G}}_1 \psi + \mathbb{G}^\perp \varphi, \quad (14)$$

where $\varphi \in H_P^o$ is uniquely determined and $\psi \in H_{V+\partial V}$ is uniquely determined up to an additive constant. Moreover the decomposition is orthogonal in the sense that $\langle \overline{\mathbb{G}}_1 \psi, \mathbb{G}^\perp \varphi \rangle_{H_S} = 0$.

Proof: By (12) and since $\overline{\mathbb{G}}_1$ considered as mapping onto H_S^o equals $\overline{\mathbb{G}}$ we see that

$$\overline{\text{Curl}} u_{\text{irr}} = \overline{\text{Curl}} \overline{\mathbb{G}}_1 \psi = 0, \quad \text{Div } u_{\text{sol}} = \text{Div } \mathbb{G}^\perp \varphi = 0.$$

Therefore we have indeed an irrotational and a solenoidal part.

By definition of the matrices it is easy to check that $\dim \mathcal{R}(\overline{\mathbb{G}}_1) = \dim H_{V+\partial V} - 1 = mn + m + n - 4$, and $\dim \mathcal{R}(\mathbb{G}^\perp) = \dim H_P^o = (m-2)(n-2)$ so that $\dim \mathcal{R}(\overline{\mathbb{G}}_1) + \dim \mathcal{R}(\mathbb{G}^\perp) = \dim H_S$. Here \mathcal{R} denotes the range of the operator. By (11) and (12) we obtain that

$$\langle \overline{\mathbb{G}}_1 \psi, \mathbb{G}^\perp \varphi \rangle_{H_S} = \langle \overline{\text{Curl}} \overline{\mathbb{G}}_1 \psi, \varphi \rangle_{H_P^o} = 0$$

and consequently $H_S = \mathcal{R}(\overline{\mathbb{G}}_1) \oplus \mathcal{R}(\mathbb{G}^\perp)$ with the orthogonal sum \oplus .

Since \mathbb{G}^\perp has full rank, the potential φ is uniquely determined by u_{sol} . Since the kernel of $\overline{\mathbb{G}}_1$ is given by $\mathcal{N}(\overline{\mathbb{G}}_1) = \{c 1_{\dim H_{V+\partial V}} : c \in \mathbb{R}\}$ we have that ψ is uniquely determined by u_{irr} up to an element from the kernel. This completes the proof. \square

Conversely, assume for $u \in H_S$ that

$$\begin{aligned} \rho &= \text{Div } u = \Delta_d \psi, \\ \omega &= \overline{\text{Curl}} u = \Delta_c \varphi, \end{aligned}$$

where

$$\Delta_d := \text{Div } \overline{\mathbb{G}}_1, \quad \Delta_c := \overline{\text{Curl}} \mathbb{G}^\perp$$

are given. Since $\Delta_c : H_P^o \rightarrow H_P^o$ is invertible, the potential φ is uniquely determined by ω while ψ (and u) are given only up to a laminar flow u_{lam} with vanishing Div and $\overline{\text{Curl}}$. The laminar flow can be determined by boundary conditions where we have to take the mimetic Gaussian integral identity (13) into account. More precisely, we have the following proposition, cf. [37]:

Proposition 2.2 *The operator*

$$\mathcal{H} := \begin{pmatrix} \text{Div} \\ \overline{\text{Curl}} \\ \mathbb{B} \end{pmatrix} \in \mathbb{R}^{\dim H_S + 1, \dim H_S},$$

provides a bijection between the spaces H_S and

$$V_S := \{(\rho, \omega, \nu)^T : 1_{\dim H_V}^T \rho = 1_{\dim H_{\partial V}}^T \nu\}.$$

More precisely, if $(\rho, \omega, \nu)^T = \mathcal{H}u$ then $u = \mathcal{H}^\dagger(\rho, \omega, \nu)^T$, i.e. the inverse mapping on V_S is given by the pseudo-inverse $\mathcal{H}^\dagger := (\mathcal{H}^T \mathcal{H})^{-1} \mathcal{H}^T$ of \mathcal{H} .

In case of a solenoidal flow field from $\{u \in H_S : \mathbb{D}iv u = 0\}$, we have by Proposition 2.1 that $\mathbb{D}iv \overline{\mathbb{G}}_1 \psi = 0$ and $\overline{\mathbb{C}url} \overline{\mathbb{G}}_1 \psi = 0$. Hence $\overline{\mathbb{G}}_1 \psi = u_{\text{lam}}$ is a laminar flow and

$$u = u_{\text{lam}} + u_{\text{sol}} = \overline{\mathbb{G}}_1 \psi + \mathbb{G}^\perp \varphi, \quad \mathcal{H}u = (0, 0, \nu)^\top + (0, \omega, 0)^\top. \quad (15)$$

Further we have the following Proposition:

Proposition 2.3 *Every solenoidal flow field $u \in H_S$ can be written as*

$$u = \mathbb{G}rad^\perp \phi \quad (16)$$

for some $\phi \in H_P$.

Proof: By properties of the tensor product it is easy to check that $\mathbb{D}iv \mathbb{G}rad^\perp = 0$ so that the right-hand side of (16) is indeed solenoidal.

By Proposition 2.2 we obtain that $\dim(\{u \in H_S : \mathbb{D}iv u = 0\}) = mn - 1$. On the other hand we have $\dim(\mathcal{R}(\mathbb{G}rad^\perp)) = \dim H_P - 1 = mn - 1$. \square

Primal and dual TV/G norms. For our optical flow decomposition and estimation we need discrete versions of the TV norm $\|f\|_{\text{TV}} := \int |\nabla f| dx dy$ and the G norm $\|f\|_{\text{G}} := \inf_{f=\text{div} p} \| |p| \|_{L^\infty}$ where $|p| := (p_1^2 + p_2^2)^{1/2}$ for a vector field $p = (p_1, p_2)$, $p_1, p_2 \in L^\infty$. For a more sophisticated treatment of these norm in the continuous setting see, e.g. [13, 21].

For $\omega \in H_P^o$ we set

$$\|\omega\|_{\text{TV}} := |\mathbb{G} \omega|_{H_E^o}.$$

This defines a semi-norm on H_P^o . As usual we will skip the prefix 'semi' in the following. Let $N := \dim H_P^o$. According to the norm in H_E^o let $S : \mathbb{R}^{\dim H_E^o} \rightarrow \mathbb{R}^{4N}$ be the matrix which assigns the four appropriate elements of H_E^o to each point of H_P^o , cf. appendix. For $w := (w^1, w^2, w^3, w^4)^\top \in \mathbb{R}^{4N}$ with $w^r := (w_j^r)_{j=1}^N$, $r = 1, \dots, 4$ we define the vector

$$|w| := \left(\|(w_j^r)_{r=1}^4\|_2 \right)_{j=1}^N. \quad (17)$$

Then the TV norm can be rewritten as

$$\|\omega\|_{\text{TV}} = \| |S \mathbb{G} \omega| \|_1.$$

Now the G norm of ω is defined by

$$\|\omega\|_{\text{G}} := \min_{\omega = \mathbb{G}^* S^* w} \| |w| \|_\infty = \min_{\omega = \mathbb{D}iv S^* w} \| |w| \|_\infty.$$

Similarly, we can define the TV and the G norm on H_V . For $\rho \in H_V$ let

$$\|\rho\|_{\overline{\text{TV}}} := |\overline{\mathbb{G}}_2 \rho|_{H_S}.$$

We focus on the second way of extending $\overline{\mathbb{G}}$ to $\overline{\mathbb{G}}_2$ and introduce the operator $\overline{S} : \mathbb{R}^{\dim H_S^o} \rightarrow \mathbb{R}^{4N}$ with $N := \dim H_V$ which constantly extrapolates from H_S^o to H_S and assigns the elements of H_S to those of H_V . For the matrix structure of \overline{S} see the appendix. Then we obtain that

$$\|\rho\|_{\overline{\mathbb{T}\mathbb{V}}} = \|\overline{S}\overline{\mathbb{G}}\rho\|_1$$

and

$$\|\rho\|_{\overline{\mathbb{G}}} := \min_{\rho=\overline{\mathbb{G}}^* \overline{S}^* p} \|p\|_\infty = \min_{\rho=\mathbb{D}iv \overline{S}^* p} \|p\|_\infty. \quad (18)$$

The G norm ($\overline{\mathbb{G}}$ norm) can be considered as dual to the TV norm ($\overline{\mathbb{T}\mathbb{V}}$ norm) in the following sense.

Proposition 2.4 *For $\tilde{\omega} \in \mathcal{R}(\mathbb{G}^* S^*)$ the following relation holds true*

$$\sup_{\|\omega\|_{\mathbb{T}\mathbb{V}} \neq 0} \frac{|\langle \tilde{\omega}, \omega \rangle|}{\|\omega\|_{\mathbb{T}\mathbb{V}}} = \|\tilde{\omega}\|_{\mathbb{G}}. \quad (19)$$

Proof: 1. Set

$$L := S\mathbb{G} : \mathbb{R}^N \rightarrow \mathbb{R}^{4N}, \quad N := \dim H_E^o.$$

Then, using the notation (17), the relation (19) can be rewritten as

$$\sup_{\|L\omega\|_1 \neq 0} \frac{|\langle \tilde{\omega}, \omega \rangle|}{\|L\omega\|_1} = \min_{\tilde{\omega}=L^T v} \|v\|_\infty, \quad \tilde{\omega} \in \mathcal{R}(L^T).$$

Let $\nu(\tilde{\omega}) := \sup_{\|L\omega\|_1 \neq 0} \frac{|\langle \tilde{\omega}, \omega \rangle|}{\|L\omega\|_1}$. By applying the Schwarz inequality to the four parts of the corresponding vectors in \mathbb{R}^{4N} , we obtain for all $v \in \mathbb{R}^{4N}$ with $L^T v = \tilde{\omega}$ that

$$\langle \tilde{\omega}, \omega \rangle = \langle v, L\omega \rangle \leq \langle |v|, |L\omega| \rangle, \quad \forall \omega \in \mathbb{R}^N,$$

and then obviously

$$\langle |v|, |L\omega| \rangle \leq \|L\omega\|_1 \|v\|_\infty \quad \forall \omega \in \mathbb{R}^N.$$

Consequently, we have

$$\nu(\tilde{\omega}) \leq \min_{\tilde{\omega}=L^T v} \|v\|_\infty.$$

To show the reverse direction we consider the subspace $\mathcal{B} := \mathcal{R}(L)$ of \mathbb{R}^{4N} equipped with the norm $\|\cdot\|_1$. Let \tilde{w} with $L^T \tilde{w} = \tilde{\omega}$ be fixed. Then the mapping $l_{\tilde{w}}(L\omega) := \langle \tilde{w}, L\omega \rangle$ is a linear functional on \mathcal{B} which has exactly the norm $\nu(\tilde{\omega})$. By the Hahn–Banach Theorem this functional can be extended

to a linear functional l on $(\mathbb{R}^{4N}, \|\cdot\|_1)$ with $\|l\| = \|l_{\tilde{w}}\|$. Then there exists $\tilde{v} \in \mathbb{R}^{4N}$ such that $l(v) = \langle \tilde{v}, v \rangle$ for all $v \in \mathbb{R}^{4N}$ and

$$\langle \tilde{v}, L\omega \rangle = \langle \tilde{w}, L\omega \rangle \quad \forall \omega \in \mathbb{R}^N.$$

Since this can be rewritten as

$$\langle L^T \tilde{v}, \omega \rangle = \langle L^T \tilde{w}, \omega \rangle \quad \forall \omega \in \mathbb{R}^N$$

the vector \tilde{v} must fulfil $L^T \tilde{v} = L^T \tilde{w} = \tilde{\omega}$. Then

$$\nu(\tilde{\omega}) = \|l_{\tilde{w}}\| = \|l\| = \|\tilde{v}\|_\infty,$$

where the last equality follows from the fact that $\|\cdot\|_1$ and $\|\cdot\|_\infty$ are dual norms on \mathbb{R}^{4N} . Thus, $\nu(\tilde{\omega}) \geq \min_{\tilde{\omega}=L^T v} \|v\|_\infty$ and we obtain the assertion. \square

3 Flow estimation

Assume now that we are given an image sequence $\{g(\cdot, j) \in H_V : j = 1, \dots, T\}$. For fixed $j \in \mathbb{N}$, we set $g_t = g_t(j) := g(\cdot, j+1) - g(\cdot, j)$. Then the data fitting functional (6) can be discretized by

$$F(u) = \|\overline{\mathbb{G}}_2 g \cdot u + g_t\|_{H_V}^2$$

with the dotproduct on H_S and by applying the mimetic Helmholtz decomposition (14) by

$$F(\psi, \varphi) = \|\overline{\mathbb{G}}_2 g \cdot \overline{\mathbb{G}}_1 \psi + \overline{\mathbb{G}}_2 g \cdot \mathbb{G}^\perp \varphi + g_t\|_{H_V}^2.$$

This further decomposition can be useful from two points of view. First the vectors ψ and φ have only approximately half the lengths of the vector u . Secondly this approach allows for efficiently handling solenoidal flows which are very common in computational fluid dynamics.

To discretize the boundary integral $\int_{\partial\Omega} (\partial_n u)^2 ds$ in (9) and (10) we use the operator

$$\mathbb{B}^n := \begin{pmatrix} I_{n-1} \otimes B_m^n & 0 \\ 0 & B_n^n \otimes I_{m-1} \end{pmatrix}$$

with

$$B_m^n := \begin{pmatrix} -1 & 1 & \dots & 0 & 0 \\ 0 & 0 & \dots & -1 & 1 \end{pmatrix} \in \mathbb{R}^{2,m}.$$

For the smoothing penalizer we distinguish between the linear and the TV approach.

Linear approach. The discrete version of the functional (9) becomes

$$J(u) = F(u) + \lambda_d \|\overline{\mathbb{G}}_2 \operatorname{Div} u\|_{H_S}^2 + \lambda_c \|\mathbb{G} \overline{\operatorname{Curl}} u\|_{H_E^o}^2 + \gamma \|\mathbb{B}^n u\|_{\partial H_S}^2. \quad (20)$$

The minimizer u of (20) can be obtained by solving the corresponding normal equation.

Using the Helmholtz decomposition together with $u|_{\partial H_S} = (\overline{\mathbb{G}}_1 \psi)|_{\partial H_S}$ and (12), problem (20) can be rewritten as

$$J(\psi, \varphi) = F(\psi, \varphi) + \lambda_d \|\overline{\mathbb{G}}_2 \triangle_d \psi\|_{H_S}^2 + \lambda_c \|\mathbb{G} \triangle_c \varphi\|_{H_E^o}^2 + \gamma \|\mathbb{B}^n \overline{\mathbb{G}}_1 \psi\|_{\partial H_S}^2. \quad (21)$$

Since ψ is only determined up to a constant we add the additional condition

$$1_{\dim H_V + \partial V}^T \psi = 0$$

to make the functional strictly convex. This problem can be solved by subspace correction methods [31, 33]. More precisely, we iterate the following process: we consider φ as given and find the solution ψ of (21) via the normal equation. Then we fix this solution as ψ and compute φ .

In case of a solenoidal flow field $u \in H_S$ we can apply (15) and our variational problem reduces to

$$\begin{aligned} J(\psi, \varphi) &= F(\psi, \varphi) + \lambda_c \|\mathbb{G} \triangle_c \varphi\|_{H_E^o}^2 + \gamma \|\mathbb{B}^n \overline{\mathbb{G}}_1 \psi\|_{\partial H_S}^2 \\ \text{s.t.} \quad &\overline{\mathbb{G}}_2 \triangle_d \psi = 0, \quad 1_{\dim H_V + \partial V}^T \psi = 0. \end{aligned}$$

The linear case was more extensively treated by some of the authors in [36].

TV approach. Functional (10) becomes

$$J(u) = \frac{1}{2} F(u) + \lambda_d \|\operatorname{Div} u\|_{\overline{\operatorname{TV}}} + \lambda_c \|\overline{\operatorname{Curl}} u\|_{\operatorname{TV}} + \frac{\gamma}{2} \|\mathbb{B}^n u\|_{\partial H_S}^2 \quad (22)$$

and by applying the Helmholtz decomposition

$$J(\psi, \varphi) = \frac{1}{2} F(\psi, \varphi) + \lambda_d \|\triangle_d \psi\|_{\overline{\operatorname{TV}}} + \lambda_c \|\triangle_c \varphi\|_{\operatorname{TV}} + \frac{\gamma}{2} \|\mathbb{B}^n \overline{\mathbb{G}}_1 \psi\|_{\partial H_S}^2, \quad (23)$$

where $1_{\dim H_V + \partial V}^T \psi = 0$. In case of solenoidal flows the functional further reduces as in the linear case.

To solve (22) we propose SOCP, cf. Section 6.

Alternatively, we can apply again a splitting algorithm in (23) which iteratively fixes φ as previously computed and finds the minimizer ψ and conversely. Then any of the subproblems with fixed φ or fixed ψ can be written in the form

$$\frac{1}{2} \|Ax - b\|_2^2 + \lambda \|Lx\|_1 \quad (24)$$

where $A : \mathbb{R}^{\dim H_V + \partial V} \rightarrow \mathbb{R}^{\dim H_V}$, $L : \mathbb{R}^{\dim H_V + \partial V} \rightarrow \mathbb{R}^{4 \dim H_V}$ in case of fixed φ and $A : \mathbb{R}^{\dim H_P^o} \rightarrow \mathbb{R}^{\dim H_V}$, $L : \mathbb{R}^{\dim H_P^o} \rightarrow \mathbb{R}^{4 \dim H_P^o}$ in case of fixed ψ . The minimizer of (24) can be found by applying dual optimization techniques as proposed by Chambolle et al. [3, 7, 6].

4 Flow decomposition

In this section, we want to decompose a given flow vector $u \in H_S$ in a meaningful way. To this end we have to compute some basic decomposition of u first. We apply Proposition 2.2 and consider $\mathcal{H}u = (\rho, \omega, \nu)^T$. Let

$$c_\rho := \frac{1_{\dim H_V}^T \rho}{\dim H_V}, \quad c_\omega := \frac{1_{\dim H_P^o}^T \omega}{\dim H_P^o}$$

be the discrete versions of $|\Omega|^{-1} \int_\Omega \operatorname{div} u \, dx dy$ and $|\Omega|^{-1} \int_\Omega \operatorname{curl} u \, dx dy$ and

$$\rho_{\text{const}} := c_\rho 1_{\dim H_V}, \quad \omega_{\text{const}} := c_\omega 1_{\dim H_P^o}. \quad (25)$$

Then we can decompose $(\rho, \omega, \nu)^T \in V_S$ as

$$(\rho, \omega, \nu) = (\rho_{\text{const}}, \omega_{\text{const}}, \nu) + (\rho_{\text{var}}, \omega_{\text{var}}, 0), \quad (26)$$

where $1_{\dim H_V}^T \rho_{\text{var}} = 1_{\dim H_P^o}^T \omega_{\text{var}} = 0$. Obviously, both summands are in V_S again so that

$$u = u_{\text{const}} + u_{\text{var}}$$

is the corresponding basic decomposition of $u \in H_S$, where

$$u_{\text{const}} = \mathcal{H}^\dagger((\rho_{\text{const}}, \omega_{\text{const}}, \nu)^T) \quad u_{\text{var}} = \mathcal{H}^\dagger(\rho_{\text{var}}, \omega_{\text{var}}, 0)^T.$$

We call vector u_{const} , resp. $(\rho_{\text{const}}, \omega_{\text{const}}, \nu)$, the basic pattern of the non-rigid flow and its boundary behaviour while u_{var} , resp. $(\rho_{\text{var}}, \omega_{\text{var}}, 0)$, is related to the variable (oscillating) flow pattern.

We are interested in further decomposing the intrinsic flow variation u_{var} into a structural part u^s and a texture part u^t , i.e.,

$$u_{\text{var}} = u^s + u^t.$$

This can be done in two ways. The **first approach** uses Proposition 2.2. Given $u \in H_S$, we compute $(\rho, \omega, \nu)^T = \mathcal{H}u$ and then $\rho_{\text{var}} = \rho - \rho_{\text{const}}$ and $\omega_{\text{var}} = \omega - \omega_{\text{const}}$ by (25). Next we decompose $\rho_{\text{var}} = \rho^s + \rho^t$ and $\omega_{\text{var}} = \omega^s + \omega^t$ by minimizing separately

$$\begin{aligned} J(\rho^s, \rho^t) &= \frac{1}{2} \|\rho_{\text{var}} - \rho^s - \rho^t\|_2^2 + \lambda_d \|\rho^s\|_{\overline{\text{TV}}} + \mu_d \|\rho^t\|_{\overline{\text{G}}}, \\ J(\omega^s, \omega^t) &= \frac{1}{2} \|\omega_{\text{var}} - \omega^s - \omega^t\|_2^2 + \lambda_c \|\omega^s\|_{\text{TV}} + \mu_c \|\omega^t\|_{\text{G}}. \end{aligned}$$

The minimizers can be computed as proposed in [3]. By (18) we see that $\rho^t \in \mathcal{R}(\overline{\mathbb{G}}^*) = \mathcal{R}(\operatorname{Div}|_{H_S^o})$ and since $1^T \operatorname{Div}|_{H_S^o} = 0$ we have that $(\rho^t, \omega^t, 0)^T \in V_S$ and further by (26) that $(\rho^s, \omega^s, 0)^T \in V_S$. Thus we can finally compute u^s and u^t by

$$u^s = \mathcal{H}^\dagger(\rho^s, \omega^s, 0)^T, \quad u^t = \mathcal{H}^\dagger(\rho^t, \omega^t, 0)^T.$$

In this paper, we prefer a **second approach** that computes the components of u directly. This variational approach extends Meyer's model for the decomposition of scalar-valued functions to the *simultaneous* decomposition of vector fields into basic and variable (structural and textural) flow patterns. Moreover it also fits into our flow estimation-decomposition model in the next section. For $u \in H_S$ we propose to find $u_{\text{const}} \in H_S$ and $u^s, u^t \in H_S^o$ by minimizing

$$\begin{aligned} J(u_{\text{const}}, u^s, u^t) &= \lambda_d \|\text{Div } u^s\|_{\overline{\text{TV}}} + \lambda_c \|\overline{\text{Curl}} u^s\|_{\text{TV}} \\ \text{s.t. } \quad &\|\text{Div } u^t\|_{\overline{\text{G}}} \leq \delta_d, \quad \|\overline{\text{Curl}} u^t\|_{\text{G}} \leq \delta_c \\ &u_{\text{const}} + u^s + u^t = u, \\ &\overline{\text{GDiv}} u_{\text{const}} = 0, \quad \text{G}\overline{\text{Curl}} u_{\text{const}} = 0, \\ &1_{\dim H_P^o}^T \overline{\text{Curl}} u^s = 0. \end{aligned} \tag{27}$$

Concerning the last three constraints we note the following: To obtain the desired decomposition we have to ensure that $\text{Div } u_{\text{const}}$ and $\overline{\text{Curl}} u_{\text{const}}$ are constant vectors $c \mathbf{1}$ and that $1_{\dim H_V}^T \text{Div } (u^s + u^t) = 0$, $1_{\dim H_P^o}^T \overline{\text{Curl}} (u^s + u^t) = 0$. The first two conditions are fulfilled by the fourth and fifth constraint. The third condition is fulfilled by the mimetic Gaussian integral identity and since $u^s, u^t \in H_S^o$. The last condition follows by the last constraint and since $\overline{\text{Curl}} u^t \in \mathcal{R}(\overline{\text{Div}})$ and $1^T \overline{\text{Div}} = 0$.

The solution of (27) can be found by SOCP as shown in the Section 6.

5 Flow estimation and decomposition

In this section, we combine optical flow estimation with structure-texture flow decomposition. Given image sequence $\{g(\cdot, j) \in H_V : j = 1, \dots, T\}$, we want to compute the components u_{const} with constant divergence and curl, the large scale patterns $u^s \in H_S^o$ of divergence and curl with bounded TV norms, and the small scale patterns $u^t \in H_S^o$ of divergence and curl with bounded G norms. To this end, we introduce the fitting functional

$$F(u_{\text{const}}, u^s, u^t) = \|\overline{\text{G}}_2 g \cdot (u_{\text{const}} + u^s + u^t) + g_t\|_2^2.$$

Then, with respect to the previous section, one can consider to minimize

$$\begin{aligned} J(u_{\text{const}}, u^s, u^t) &= \frac{1}{2} F(u_{\text{const}}, u^s, u^t) + \lambda_d \|\text{Div } u^s\|_{\overline{\text{TV}}} + \lambda_c \|\overline{\text{Curl}} u^s\|_{\text{TV}} \\ &\quad + \frac{\gamma}{2} \|\mathbb{B}^n u\|_{\partial H_S}^2 \\ \text{s.t. } \quad &\|\text{Div } u^t\|_{\overline{\text{G}}} \leq \delta_d, \quad \|\overline{\text{Curl}} u^t\|_{\text{G}} \leq \delta_c, \\ &\overline{\text{GDiv}} u_{\text{const}} = 0, \quad \text{G}\overline{\text{Curl}} u_{\text{const}} = 0, \\ &1_{\dim H_P^o}^T \overline{\text{Curl}} u^s = 0. \end{aligned}$$

Unfortunately, this approach is not well-posed. For the image areas where $\nabla g = 0$, the data term disappears, and the local constraints on the G -norms will lead to unbounded solutions. Therefore, we propose to replace the G norm by the L_2 -norm which leads to

$$\begin{aligned} J(u_{\text{const}}, u^s, u^t) &= \frac{1}{2} F(u_{\text{const}}, u^s, u^t) + \lambda_d \|\text{Div } u^s\|_{\overline{\text{TV}}} + \lambda_c \|\overline{\text{Curl}} u^s\|_{\text{TV}} \\ &\quad + \mu_d \|\text{Div } u^t\|_2^2 + \mu_c \|\overline{\text{Curl}} u^t\|_2^2 + \frac{\gamma}{2} \|\mathbb{B}^n u\|_{\partial H_S}^2, \quad (28) \\ \text{s.t. } \quad \overline{\mathbb{G}} \text{Div } u_{\text{const}} &= 0, \quad \mathbb{G} \overline{\text{Curl}} u_{\text{const}} = 0, \\ 1_{\dim H_P}^T (\overline{\text{Curl}} u^s + \overline{\text{Curl}} u^t) &= 0. \end{aligned}$$

We will see in our experiments that this approach works well although the superiority of the G -norm over the L_2 -norm in capturing (scalar) oscillating patterns was experimentally shown in [4].

Finally, we are interested in solenoidal flows $u \in H_S$. Coupling the mimetic Helmholtz decomposition and the basic decomposition we obtain with the laminar flow $\overline{\mathbb{G}}_1 \psi$ and $\varphi = \varphi_{\text{const}} + \varphi^s + \varphi^t$ that

$$u = u_{\text{const}} + u^s + u^t = (\overline{\mathbb{G}}_1 \psi + \mathbb{G}^\perp \varphi_{\text{const}}) + \mathbb{G}^\perp \varphi^s + \mathbb{G}^\perp \varphi^t.$$

By Proposition 2.3 and since $\mathbb{G} \text{Grad}^\perp|_{H_P^o} = \mathbb{G}^\perp$ this can be rewritten as

$$u = \mathbb{G} \text{Grad}^\perp (\phi_{\text{const}} + \varphi^s + \varphi^t), \quad \phi \in H_P, \varphi^s, \varphi^t \in H_P^o.$$

Then the fitting term reads

$$F(\phi_{\text{const}}, \varphi^s, \varphi^t) = \|\overline{\mathbb{G}}_2 g \cdot \mathbb{G} \text{Grad}^\perp (\phi_{\text{const}} + \varphi^s + \varphi^t) + g_t\|_2^2$$

and (28) can be rewritten as

$$\begin{aligned} J(\phi_{\text{const}}, \varphi^s, \varphi^t) &= \frac{1}{2} F(\phi_{\text{const}}, \varphi^s, \varphi^t) + \lambda_c \|\Delta_c \varphi^s\|_{\text{TV}} + \mu_c \|\Delta_c \varphi^t\|_2^2 \quad (29) \\ &\quad + \frac{\gamma}{2} \|\mathbb{B}^n \mathbb{G} \text{Grad}^\perp \phi_{\text{const}}\|_{\partial H_S}^2 \\ \text{s.t. } \quad \mathbb{G} \overline{\text{Curl}} \mathbb{G} \text{Grad}^\perp \phi_{\text{const}} &= 0, \quad 1_{\dim H_P^o}^T \Delta_c (\varphi^s + \varphi^t) = 0, \\ 1_{\dim H_P}^T \phi_{\text{const}} &= 0, \end{aligned}$$

where the last constraint appears since ϕ_{const} is only determined up to an additive element from the kernel of $\mathbb{G} \text{Grad}^\perp$ which consists of constant vector fields.

6 Algorithmic aspects - SOCP

Our computational approach to flow estimation via (27) and to simultaneous flow estimation and decomposition via (29) is based on second-order cone

programming (SOCP) [20]. This amounts to minimizing a linear objective function subject to the constraints that several affine functions of the variables have to lie in a *second order cone* $\mathcal{L}^{n+1} \subset \mathbb{R}^{n+1}$ defined by the convex set

$$\mathcal{L}^{n+1} = \left\{ \begin{pmatrix} x \\ t \end{pmatrix} = (x_1, \dots, x_n, t)^\top : \|x\|_2 \leq t \right\}.$$

With this notation, the general form of a SOCP is given by

$$\inf_{x \in \mathbb{R}^n} f^\top x, \text{ s.t. } \begin{pmatrix} A_i x + b_i \\ c_i^\top x + d_i \end{pmatrix} \in \mathcal{L}^{n+1}, \quad i = 1, \dots, r. \quad (30)$$

Problem (30) is a convex program for which efficient, large scale solvers are available [22]. In connection with TV-based image decomposition the application of SOCPs was recently suggested in [35, 34].

We reformulate the variational approach (27) as the SOCP:

$$\begin{aligned} J(u_{\text{const}}, u^s, u^t) &= \lambda_d 1_{\dim H_V}^\top v + \lambda_c 1_{\dim H_P^o}^\top w \\ \text{s.t. } u_{\text{const}} + u^s + u^t &= u, \quad \overline{\mathbb{G}} \text{Div } u_{\text{const}} = 0, \quad \overline{\mathbb{G}} \overline{\text{Curl}} u_{\text{const}} = 0 \\ 1_{\dim H_P^o}^\top \overline{\text{Curl}} u^s &= 0, \quad \text{Div } u^t = \text{Div } p_d, \quad \overline{\text{Curl}} u^t = \text{Div } p_c \\ \begin{pmatrix} (\overline{\mathbb{G}} \text{Div } u^s)_{V_{i+\frac{1}{2}, j+\frac{1}{2}}} \\ v_{V_{i+\frac{1}{2}, j+\frac{1}{2}}} \end{pmatrix} &\in \mathcal{L}^5, \quad \begin{pmatrix} (\overline{\mathbb{G}} \overline{\text{Curl}} u^s)_{P_{i,j}} \\ w_{P_{i,j}} \end{pmatrix} \in \mathcal{L}^5 \\ \begin{pmatrix} (p_d)_{V_{i+\frac{1}{2}, j+\frac{1}{2}}} \\ \delta_d \end{pmatrix} &\in \mathcal{L}^5, \quad \begin{pmatrix} (p_c)_{P_{i,j}} \\ \delta_c \end{pmatrix} \in \mathcal{L}^5 \end{aligned}$$

In order to incorporate the quadratic terms of the variational approaches to optical flow estimation, we use the following rotated version of the standard cone:

$$\mathcal{R}^{n+2} := \left\{ (x, x_{n+1}, x_{n+2})^\top \in \mathbb{R}^{n+2} : \frac{1}{2} \|x\|_2^2 \leq x_{n+1} x_{n+2}, \quad x_{n+1}, x_{n+2} \geq 0 \right\}.$$

Fixing $x_{n+2} = 1/2$, we have $\|x\|_2^2 \leq x_{n+1}$. Now we can rewrite (29) as follows:

$$\begin{aligned} J(\phi_{\text{const}}, \varphi^s, \varphi^t) &= v + \mu_c t + \lambda_c 1_{\dim H_P^o}^\top w \\ \text{s.t. } \overline{\mathbb{G}} \overline{\text{Curl}} \overline{\text{Grad}}^\perp \phi_{\text{const}} &= 0, \quad 1_{\dim H_P}^\top \phi_{\text{const}} = 0 \\ 1_{\dim H_P^o}^\top \Delta_c(\varphi^s + \varphi^t) &= 0, \\ \begin{pmatrix} (\overline{\mathbb{G}} \Delta_c \varphi^s)_{V_{i+\frac{1}{2}, j+\frac{1}{2}}} \\ w_{V_{i,j}} \end{pmatrix} &\in \mathcal{L}^5, \quad \begin{pmatrix} \Delta_c \varphi^t \\ t \\ 1/2 \end{pmatrix} \in \mathcal{R}^{\dim H_P + 2} \\ \begin{pmatrix} \overline{\mathbb{G}}_2 g \cdot \overline{\text{Grad}}^\perp(\phi_{\text{const}} + \varphi^s + \varphi^t) + g_t \\ v \\ 1/2 \end{pmatrix} &\in \mathcal{R}^{\dim H_V + 2} \end{aligned}$$

7 Numerical Examples

In this section we verify our approaches by numerical examples. The programs were written in MATLAB and used the software package SeDuMi for SOCP [27]. Unfortunately, we do not have an automatized choice of parameter values. Parameter values were chosen by hand following two general rules: (i) Choose the weights as small as possible in order to not smooth out turbulent motion. (ii) For TV-terms, smaller values than in the linear case (e.g., (21)) are appropriate, because these regularizers return larger values than their linear counterparts (assuming that image data are scaled to the range $[0, 1]$). Rule (ii) leads to parameter values of the order $\propto e^{-4}$. Thanks to the mimetic discretization, this suffices for numerical stability

Flow estimation. We start by comparing flow estimations obtained by the linear approach (21) and the TV approach (23). We consider the artificial example in Fig. 3 with the groundtruth on top of Fig. 4. Fig. 4 (middle) was obtained by solving the linear systems of equations resulting from (21) with parameters $\lambda_d = 0.06$, $\lambda_c = 0.048$. As boundary parameter we have used $\gamma = 0.04$. The result shows the typical blurring effects at the edges. If we decrease the parameter values the rectangular shape of div and curl becomes better visible but the artefacts always visible in Fig. 4 (middle) increase too. The bottom of Fig. 4 contains the solution of (22) with the parameters $\lambda_d = e^{-6}$, $\lambda_c = e^{-6}$ and $\gamma = e^{-5}$ by SOCP and 17 iterations. As expected for this example, the TV approach gives very good results by preserving discontinuities of flow derivatives (div, curl).

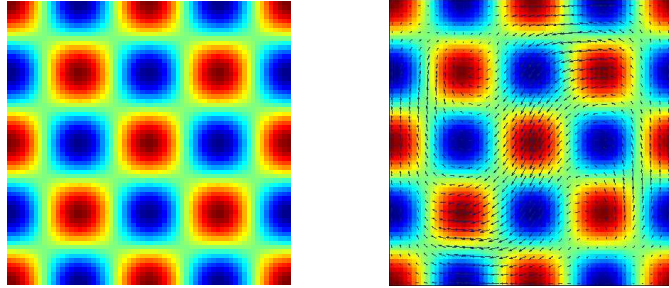


Figure 3: Frame g (left) and its warping with the groundtruth flow (right) for flow estimation by the linear approach and the TV approach.

Flow decomposition. Figure 5 shows a turbulent flow field u as ground truth along with its divergence ρ and curl ω . Applying the variational method (27) with $\lambda_d = 0.2$, $\lambda_c = 0.5$, and $\delta_d = 0.05$, $\delta_c = 0.1$, we obtain the decompositions depicted in Figures 6 and 7. The structural and textural

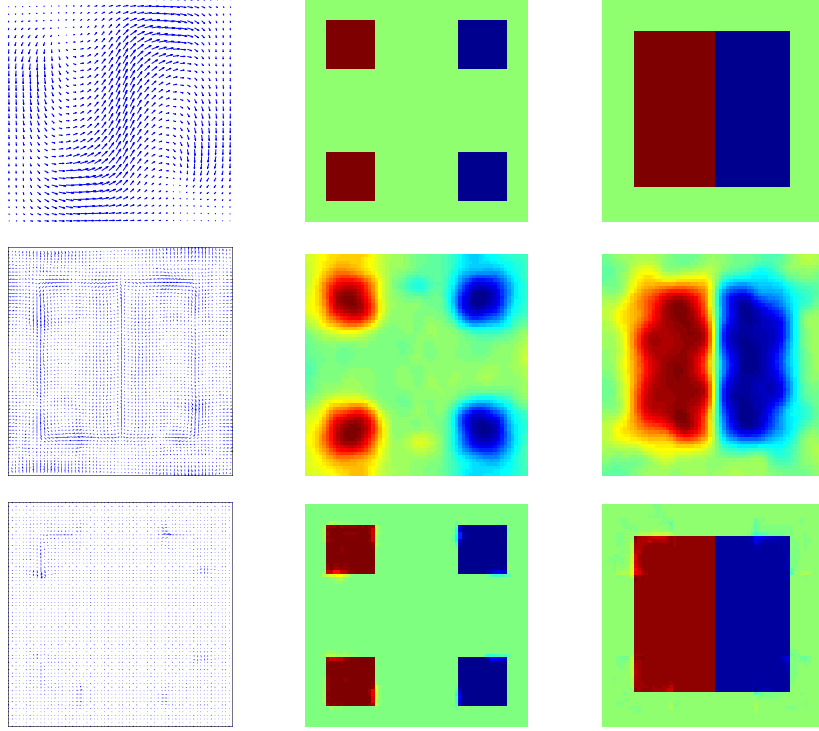


Figure 4: Top: The groundtruth flow u , its div and curl (left to right). Middle: Linear reconstruction by (20), difference between u and its estimation, reconstructed div and curl (left to right). Bottom: TV reconstruction by (22). difference between u and its estimation, reconstructed div and curl(left to right).

components recovered the interesting motion patterns at different scales, which are not easily visible in the flow u itself.

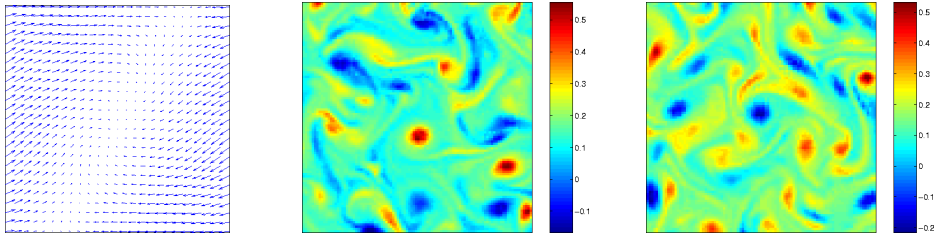


Figure 5: Ground truth data to be decomposed: flow field u (left), its divergence field ρ (middle), and its curl field ω (right).

Flow estimation and decomposition. In this section we will validate the flow estimation–decomposition model (29). First we created a divergence–

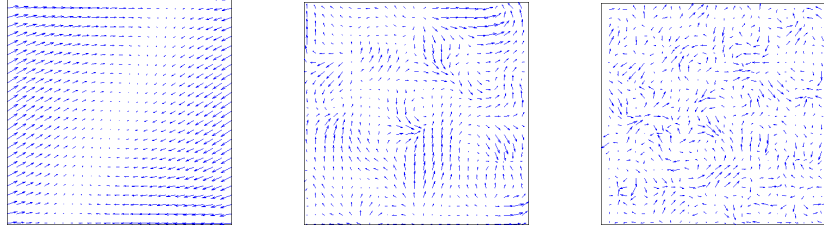


Figure 6: The components of the flow u from Fig. 5: u_{const} (left), u^s (middle), and u^t (right). The vectors of u^s, u^t are scaled-up for better visibility. Note that despite $|u| \approx |u_{\text{const}}|$, the structural and texture part u^s and u^t are recovered well.

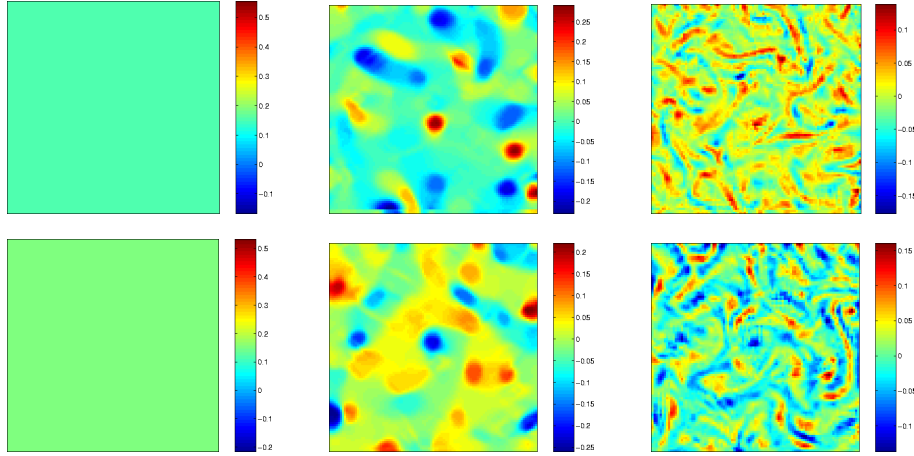


Figure 7: Decomposition of u from Fig. 5 with the approach (27). Top: $\rho_{\text{const}}, \rho^s, \rho^t$ (left to right). Bottom: $\omega_{\text{const}}, \omega^s, \omega^t$ (left to right). The structure and texture components reveal turbulent flow patterns at different scales which are not easily visible in the flow u itself.

free ground truth flow field u by superimposing a dominant laminar flow with some turbulent vortices structures, see Fig. 8. Using this flow, an artificial image sequence $\{g\}$ was created.

Figures 9 and 10 show the decomposition-based optical flow estimates, where we have used $\lambda_c = 6e^{-5}$ and $\mu_c = 3e^{-4}$. The boundary parameter was chosen slightly smaller than λ_d . The u_{const} component nicely recovered the laminar flow, whereas the structural and textural components reveal the turbulent curl field. Finally, Fig. 10 gives a close-up view of a section of Fig. 9.

Real-world example. Figure 11, top-left, shows a sample image of the experimental evaluation of the spreading of a low diffusivity dye in a 2D

turbulent flow, forced at a large scale. The passive scalar is a mixture of fluorescein and water. The divergence of the corresponding flow vanishes. For more details about the experimental setup, we refer to [39].

Figure 11 shows the components of the flow and curl field estimated in terms of $\phi_{\text{const}}, \varphi^s, \varphi^t$ by minimizing (29) (parameter values: $\lambda_c = 1e^{-4}$, $\mu_c = 3e^{-4}$, $\gamma = 5e^{-4}$). This result clearly demonstrates how the convex constrained optimization approach allows for estimating complex flows while simultaneously separating large-scale coherent motion patterns from turbulent fluctuations.

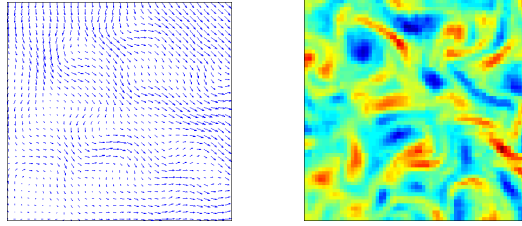


Figure 8: Ground truth data u (left) and its curl (right) to be estimated from a corresponding artificially created image sequence. Here u is a superposition of a laminar flow and turbulent vortices.

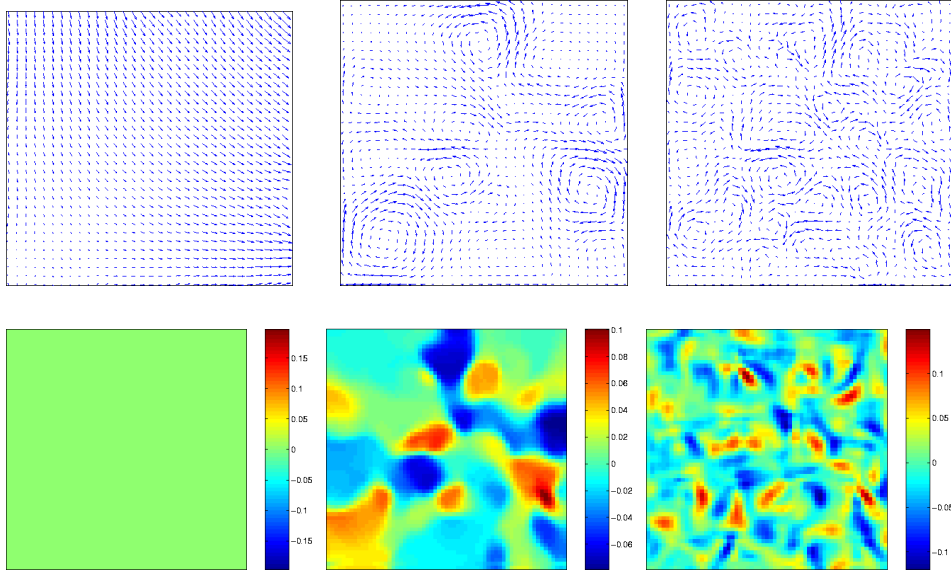


Figure 9: Estimated and decomposed flow corresponding to Fig. 8 using the $TV - L_2$ approach (29). Top: u_{const}, u^s and u^t (left to right). Bottom: $\omega_{\text{const}}, \omega^s$ and ω^t (left to right).

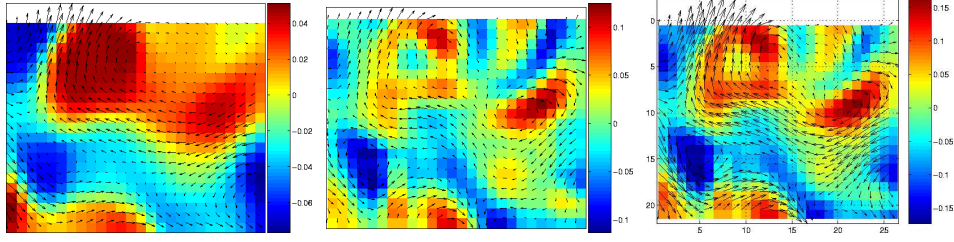


Figure 10: Close-up view of a section of Fig. 9. From left to right: $\omega^s, \omega^t, \omega^s + \omega^t$ with the corresponding flows as overlays.

A Additional matrix notation

The extensions $\overline{\mathbb{G}}_1, \overline{\mathbb{G}}_2$ of $\overline{\mathbb{G}} = -(\text{Div}|_{H_S^0})^* = \begin{pmatrix} I_{n-1} \otimes D_{m-1} \\ D_{n-1} \otimes I_{m-1} \end{pmatrix}$ are given as follows: Let

$$D_m^1 := \begin{pmatrix} -2 & 2 & 0 & \cdots & 0 & 0 & 0 \\ 0 & -1 & 1 & \cdots & 0 & 0 & 0 \\ & & \ddots & \ddots & \ddots & \ddots & \ddots \\ 0 & 0 & 0 & \cdots & -1 & 1 & 0 \\ 0 & 0 & 0 & \cdots & 0 & -2 & 2 \end{pmatrix} \in \mathbb{R}^{m,m+1}$$

and

$$D_m^2 := \begin{pmatrix} -1 & 1 & 0 & \cdots & 0 & 0 & 0 \\ -1 & 1 & 0 & \cdots & 0 & 0 & 0 \\ 0 & -1 & 1 & \cdots & 0 & 0 & 0 \\ & & \ddots & \ddots & \ddots & \ddots & \ddots \\ 0 & 0 & 0 & \cdots & -1 & 1 & 0 \\ 0 & 0 & 0 & \cdots & 0 & -1 & 1 \\ 0 & 0 & 0 & \cdots & 0 & -1 & 1 \end{pmatrix} \in \mathbb{R}^{m+1,m}$$

and let the diagonal matrices Z_1 and Z_2 be defined by

$$Z_1 := (0_{(n-1)m, m-1}, I_{(n-1)(m+1)}, 0_{(n-1)m, m-1}),$$

$$Z_2 := \begin{pmatrix} I_{m-1} & 0_{m-1, (n-1)(m+1)} & 0_{m-1, m-1} \\ 0_{(n-1)(m-1), m-1} & I_{n-1} \otimes (0_{m-1, 1}, I_{m-1}, 0_{m-1, 1}) & 0_{(n-1)(m-1), m-1} \\ 0_{m-1, m-1} & 0_{m-1, (n-1)(m+1)} & I_{m-1} \end{pmatrix},$$

where $0_{m,n}$ is the matrix consisting of $m \times n$ zeros. Then

$$\overline{\mathbb{G}}_1 := \begin{pmatrix} (I_{n-1} \otimes D_m^1)Z_1 \\ (D_n^1 \otimes I_{m-1})Z_2 \end{pmatrix}, \quad \overline{\mathbb{G}}_2 := \begin{pmatrix} I_{n-1} \otimes D_{m-1}^2 \\ D_{n-1}^2 \otimes I_{m-1} \end{pmatrix}$$

The matrices S and \overline{S} for the computation of the TV and G norm can be defined using

$$L_m(a) := \begin{pmatrix} \frac{1}{\sqrt{2}}a & 0_{1, m-1} \\ 0 & \frac{1}{\sqrt{2}}I_m \end{pmatrix}, \quad R_m(a) := \begin{pmatrix} \frac{1}{\sqrt{2}}I_m & \\ 0_{1, m-1} & \frac{1}{\sqrt{2}}a \end{pmatrix}$$

as

$$S := \begin{pmatrix} I_{n-2} \otimes L_{m-3}(0) & 0 \\ I_{n-2} \otimes R_{m-3}(0) & 0 \\ 0 & L_{n-3}(0) \otimes I_{m-2} \\ 0 & R_{n-3}(0) \otimes I_{m-2} \end{pmatrix}, \quad \overline{S} := \begin{pmatrix} I_{n-1} \otimes L_{m-2}(1) & 0 \\ I_{n-1} \otimes R_{m-2}(1) & 0 \\ 0 & L_{n-2}(1) \otimes I_{m-1} \\ 0 & R_{n-2}(1) \otimes I_{m-1} \end{pmatrix}.$$

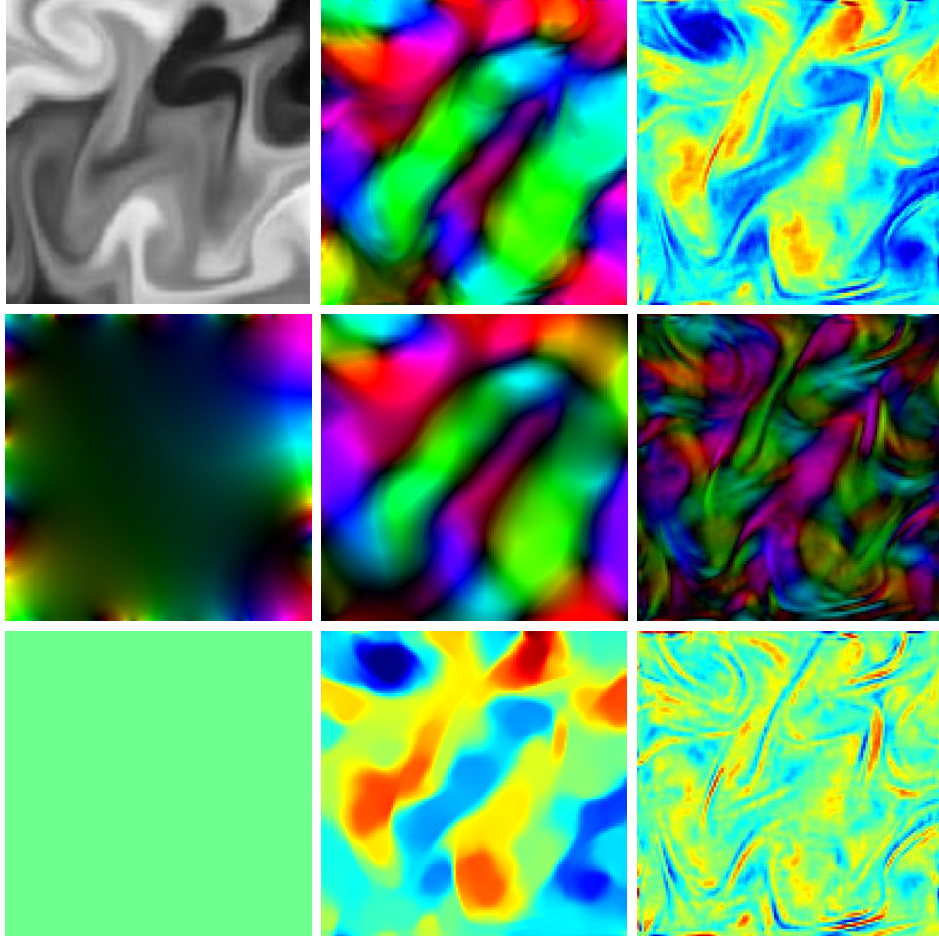


Figure 11: Top-left: frame of a real image sequence depicting the mixture of fluorescein and water [39]. Top-center: the turbulent solenoidal flow estimated by minimizing (29). Flow vectors are color-coded for better visibility (color \simeq direction, magnitude \simeq brightness). Top-right: the curl field comprising large-scale patterns immersed in turbulent oscillations. Middle, from left to right: $u_{\text{const}}, u^s, u^t$. Note that u_{const} contains the (non-vanishing) boundary values, and how u^s and u^t separate coherent motion patterns and turbulent fluctuations, respectively. Bottom, from left to right: the curl fields $\omega_{\text{const}}, \omega^s$ and ω^t .

References

- [1] L. Amodei and M. N. Benbourhim. A vector spline approximation. *Journal of Approximation Theory*, 67(1):51–79, 1991.
- [2] G. Aubert, R. Deriche, and P. Kornprobst. Computing optical flow via variational techniques. *SIAM J. Appl. Math.*, 60(1):156–182, 1999.

- [3] J.-F. Aujol, G. Aubert, L. Blanc-Féraud, and A. Chambolle. Image decomposition application to SAR images. In L. D. Griffin and M. Lillholm, editors, *Scale-Space Methods in Computer Vision*, volume 2695 of *Lecture Notes in Computer Science*, pages 297–312, Berlin, 2003. Springer.
- [4] J. F. Aujol and A. Chambolle. Dual norms and image decomposition models. *International Journal of Computer Vision*, 63(1):85–104, 2005.
- [5] J. F. Aujol, G. Gilboa, T. Chan and S. Osher. Structure-Texture Image decomposition - Modeling, Algorithms, and Parameter Selection. UCLA-Report 05-10, 2005.
- [6] J. Bect, L. Blanc-Féraud, G. Aubert, and A. Chambolle. A l_1 -unified variational framework for image restoration. In T. Pajdla and J. Matas, editors, *ECCV 2004*, volume 3024 of *Lecture Notes in Computer Science*, pages 1–13. Springer, Berlin-Heidelberg, 2004.
- [7] A. Chambolle. An algorithm for total variation minimization and applications. *Journal of Mathematical Imaging and Vision*, 20:89–97, 2004.
- [8] T. F. Chan and A. Marquina and P. Mulet. High-order total variation-based image restoration. *SIAM Journal on Scientific Computing*, 22(2):503–516, 2000.
- [9] T. Corpetti, E. Mémin, and P. Pérez. Dense estimation of fluid flows. *IEEE Transactions on Pattern Analysis and Machine Intelligence*, 24(3):365–380, 2002.
- [10] T. Corpetti, D. Heitz, G. Arroyo, É. Mémin, and A. Santa-Cruz. Fluid experimental flow estimation based on an optical-flow scheme. *Experiments in Fluids*, 40:80–97, 2006.
- [11] M. D. I. Daubechies and C. D. Mol. An iterative thresholding algorithm for linear inverse problems with a sparsity constraint. *Communications in Pure and Applied Mathematics*, 51:1413 – 1541, 2004.
- [12] I. Daubechies and G. Teschke. Variational image restoration by means of wavelets: simultaneous decomposition, deblurring and denoising. *Applied and Computational Harmonic Analysis*, 19(1):1–16, 2005.
- [13] L. C. Evans and R. F. Gariepy. *Measure Theory and Fine Properties of Functions*. CRC Press, Boca Raton, 1992.
- [14] F. Guichard and L. Rudin. Accurate estimation of discontinuous optical flow by minimizing divergence related functionals. In *Proc. ICIP*, volume I, pages 497–500, 1996.

- [15] S. Gupta and J. Prince. Stochastic models for div-curl optical flow methods. *Signal Proceeding Letters*, 3(2):32–34, 1996.
- [16] W. Hinterberger, O. Scherzer, C. Schnörr, and J. Weickert. Analysis of optical flow models in the framework of calculus of variations. *Numer. Funct. Anal. Optimiz.*, 23(1/2):69–89, 2002.
- [17] B. Horn and B. Schunck. Determining optical flow. *Artificial Intelligence*, 17:185–203, 1981.
- [18] J. M. Hyman and M. J. Shashkov. Natural discretizations for the divergence, gradient, and curl on logically rectangular grids. *Comput. Math. Appl.*, 33(4):81–104, 1997.
- [19] J. Lewalle, J. Delville, and J.-P. Bonnet. Decomposition of mixed layer turbulence into coherent structures and back-ground fluctuations. *Applied Scientific Research*, 64(4):301–328, 2000.
- [20] S. B. M. S. Lobo, L. Vandenberghhe and H. Lebrete. Applications of second order cone programming. *Linear Algebra and its Applications*, 1998.
- [21] Y. Meyer. *Oscillating Patterns in Image Processing and Nonlinear Evolution Equations*, volume 22 of *University Lecture Series*. AMS, Providence, 2001.
- [22] H. Mittelmann. An independent bechmarking of SDP and SOCP solvers. *Mathematical Programming Series B*, 95(2):407–430, 2003.
- [23] M. Nikolova. Minimizers of cost functions involving nonsmooth data-fidelity terms. Applications to the processing of outliers. *SIAM Journal on Numerical Analysis*, 40(3):965–994, 2002.
- [24] S. Osher, A. Sole, and L. A. Vese. Image deconposition and restoration using total variation minimization and the h^{-1} norm. *Multiscale Modeling and Simulation: A SIAM Interdisciplinary Journal*, 1(3):349–370, 2003.
- [25] M. Raffel, C. Willert, and J. Kompenhans. *Particle image Velocimetry*. Springer, New York, second edition, 2001.
- [26] L. I. Rudin, S. Osher, and E. Fatemi. Nonlinear total variation based noise removal algorithms. *Physica D*, 60:259–268, 1992.
- [27] SeDuMi, optimization software, <http://sedumi.mcmaster.ca/>.
- [28] J.-L. Starck, M. Elad, and D. L. Donoho. Image decomposition via the combination of sparse representations and a variational approach. Technical report, University of Stanford, Stanford, 2004.

- [29] G. Steidl. A note on the dual treatment of higher order regularization functionals. *Computing*, 76:135–148, 2005.
- [30] D. Suter. Motion estimation and vector splines. In *Proc. of the Conference on Computer Vision and Pattern Recognition*, pages 939–942, Los Alamos, USA, 1994.
- [31] X.-C. Tai and J. Xu. Global and uniform convergence of subspace correction methods for some convex optimization problems. *Mathematics of Computation*, 71(237):105–124, 2002.
- [32] L. Vese and S. Osher. Modeling textures with total variation minimization and oscillating patterns in image processing. *Journal of Scientific Computing*, 19:553–572, 2003.
- [33] J. Xu. Iterative methods by space decomposition and subspace correction: a unifying approach. *SIAM Reviews*, 34:581–613, 1992.
- [34] W. Yin, D. Goldfarb, and S. Osher. Total variation based image cartoon-texture decomposition. Technical Report CORC TR-2005-01, Columbia University, USA, 2005.
- [35] D. Goldfarb and W. Yin. Second order cone programming methods for total variation-based image restoration. *SIAM Journal on Scientific Computing*, 27(2):622–645, 2005.
- [36] J. Yuan, R. Ruhnau, E. Mémin, and C. Schnörr. Discrete orthogonal decomposition and variational fluid flow estimation. In *Scale Space and PDE Methods in Computer Vision*, volume 3459 of *LNCS*, pages 267–278. Springer, 2005.
- [37] J. Yuan, C. Schnörr, G. Steidl, and F. Becker. A study of non-smooth convex flow decomposition. In *Proc. Variational, Geometric and Level Set Methods in Computer Vision*, volume 3752 of *LNCS*, pages 1–12. Springer, 2005.
- [38] J. Yuan, C. Schnörr, and E. Mémin. Discrete orthogonal decomposition and variational fluid flow estimation. *J. Math. Imag. Vision*. in press.
- [39] Jullien M.C., P. Castiglione, and Tabeling P. Intermittency of a passive tracer in the inverse energy cascade. *Physical Review*, E 64(3), 2001.